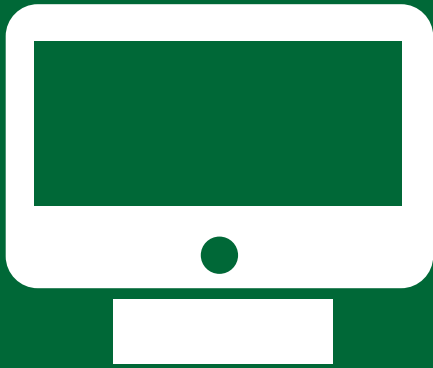
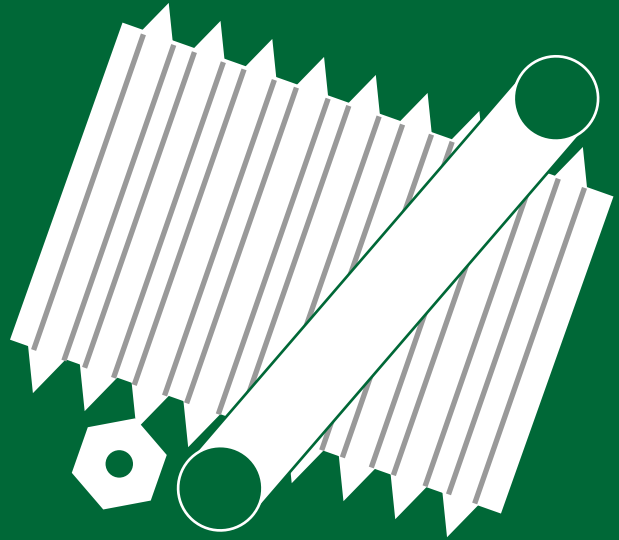


RECYCLING DROP-OFF EVENT

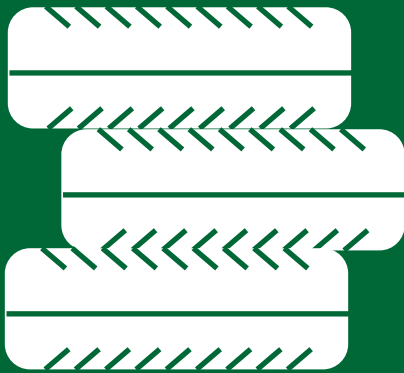
8 a.m.-noon Saturday, Aug. 15
Columbia Place Mall, 7201 Two Notch Road, Columbia



ELECTRONICS
limit 2/car



SCRAP METAL



TIRES
limit 8/car

**AND PAPER
FOR SHREDDING**

limit of 4 boxes/car



For more information,
call Solid Waste & Recycling at 803-576-2440
No commercial materials - Richland County residents only